

TETRAGON - interior

TETRAGON



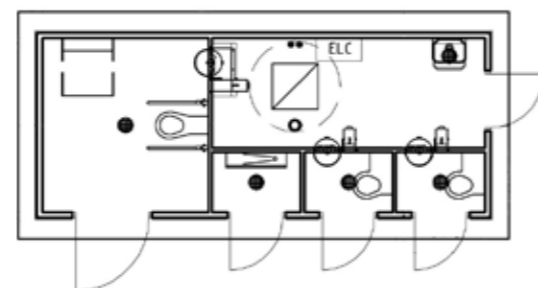
With more than 40 years' experience of designing and building public toilets, we know how demanding the harsh reality can be.

Danfo's public toilets are built to withstand external and internal wear and tear.

The interior is hygienic, vandal resistant and fit for purpose. All materials have been carefully tested and evaluated, both by our development staff and by the visitors to our installations.

Public toilets in urban environments offer advanced automatic functions, while landscape toilets feature simpler, but still user-friendly, interiors.

The result is a public toilet that is comfortable for visitors, easy to maintain for managers - and long lasting for everyone.



Example of a Tetragon.

© Danfo 2009
www.danfo.co.uk



*- public toilet for urban
and landscape environments*

TETRAGON in cities

"I deem it to be the duty of every civilised city to provide and maintain toilet facilities for the public"

Jakko Markkula, city architect, Helsinki, Finland



And it is equally important that the public toilets provided meet the specific needs of each city.

Danfo's Tetrakon is a public toilet designed and built to fit your circumstances.

Its size and design is always flexible - but its durability, ability to withstand vandalism and high quality remain the same everywhere.

Tetrakon in cities:



Ribersborg, Sweden



Doha, Qatar



Helsinki, Finland



Southend-on-Sea, Great Britain



Malmö, Sweden



Copenhagen, Denmark

TETRAGON in landscape environments

Tetrakon in landscape environments:



Skåneporten, Sweden



Skåpafors, Sweden



Tossebergsklätten, Sweden



Mora Stenar, Sweden



Saltkällan, Sweden



Tre Ångar, Sweden

Road side rest areas, beaches, recreational areas - good public toilets are needed in many rural places. Tetrakon is ideally suited to the variable needs of these sites.

The flexible design of the Tetrakon means that each installation is built to complement its environment.

The Tetrakon can also be fitted with a waste tank and placed where there is no access to sewage.

User-friendly, vandalism-proof public toilets will give you better accessibility and increased cleanliness - and they will also provide environmental protection for sensitive sites.

